

# ALPINE MEADOW

1,811 Square Feet  
 2 Bed / 2 Bath  
 2 Car Garage  
 1 Story  
 Den  
 Great Room  
 Dining Nook



Elevation A



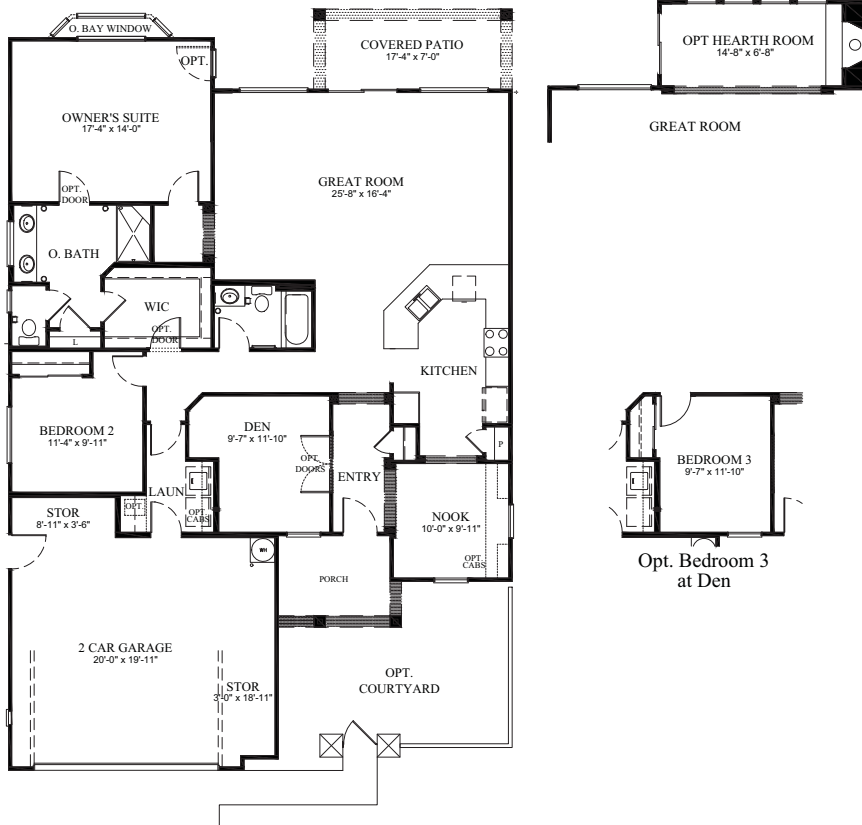
Elevation B



Elevation C



Elevation D



## CLASSICS FEATURES

### First Impressions

- Timeless architectural designs
- Custom designed exterior paint schemes
- Decorative stone accents (per elevation)
- Front yard landscaping with automatic sprinklers
- Concrete siding with a 50-year warranty (per elevation)
- Concrete roof tiles with a limited lifetime warranty
- Dramatic 8' Thermo-Tru Fiber Classic entry door
- Broom finished concrete driveway and walkway
- Sectional roll-up raised panel garage doors
- Electric garage door opener with two remotes
- Energy efficient dual pane Low E Vinyl windows
- Rear and side yard fencing

### Dream Kitchens

- State-of-the-art, black Whirlpool Gold® appliances including-
  - Built-in 36" gas cook top with five power burners and precise heat controls
  - Built-in 30" double oven with one touch bake feature and convection cooking system on upper
  - Built-in ENERGY STAR qualified dishwasher with Quiet Partner sound system and hidden controls
  - Built-in vented microwave/hood combo
- Granite slab countertops with 6" backspalsh
- Beautiful maple cabinetry including-
  - Designer features including concealed hinges, melamine interiors, adjustable upper shelves and roll out shelf in lower maple cabinets
- Stainless steel, under-mount double bowl sink with waste disposal
- Moen® faucet with pullout spray
- Overhead recessed can lighting

### Enhanced Living Spaces

- Impressive 12" tile in entry, kitchen, baths, laundry, and nook (per plan)
- Central heat and 13-seer air conditioning system
- Raised panel doors throughout the entire home
- Impressive 3 1/4" baseboards
- Rounded bullnose drywall corners
- Rocker switches
- Pre-wired television in great room and master bedroom
- Pre-wired telephone in kitchen and master bedroom
- Ceiling fan pre-wire in great room and master bedroom
- Direct vent gas fireplace included in Estate Series
- Covered rear patio with lighting (per plan)

### Elegant Baths

- Master bath includes beautiful solid surface surrounds and countertops
- Guest baths include integrated tub surround and solid surface countertops
- Beautiful recessed panel maple cabinetry including-
  - Designer features including concealed hinges and melamine interiors
- Designer faucet fixtures by Moen®
- Full width vanity mirror in master bath
- Frameless medicine cabinet (per plan) in master bath
- Clear glass shower enclosure with chrome frame at master bath

**HOMESITE #** \_\_\_\_\_

**BUYER:** \_\_\_\_\_

**CO-BUYER:** \_\_\_\_\_

*Del Webb®*



Prices, financing, plans, specifications, features, square footage, product availability and other terms are effective date of publication and subject to change without notice. The square footage calculation for this house was made based on plan dimensions or digital drawing files only and may vary from finished square footage of the house as built. Floorplan and elevations are an artists's renderings. Front exterior or designs including, but not limited to, placement, size and number of windows, porches and entries may vary per elevation. This plan has a copyright by Del Webb and may not be reproduced without written consent. 11/19/2013