

DONNER

1,635 Square Feet
 2 Bed / 2 Bath
 2 Car Garage
 1 Story
 Optional Hearth Room
 Dining Room
 Den



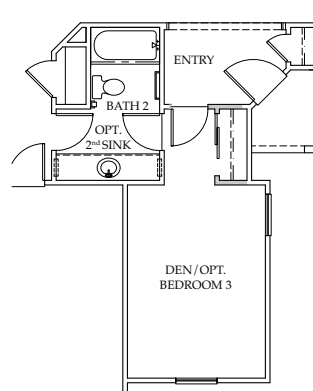
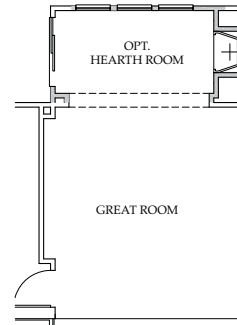
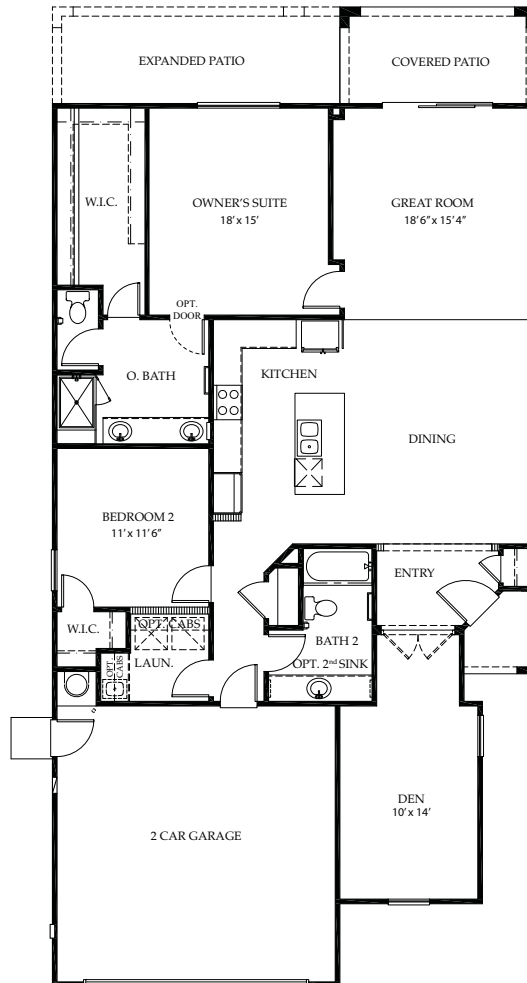
Elevation A



Elevation B



Elevation C



CLASSICS FEATURES

First Impressions

- Timeless architectural designs
- Custom designed exterior paint schemes
- Decorative stone accents (per elevation)
- Front yard landscaping with automatic sprinklers
- Concrete siding with a 50-year warranty (per elevation)
- Concrete roof tiles with a limited lifetime warranty
- Dramatic 8' Therma-Tru Fiber Classic entry door
- Broom finished concrete driveway and walkway
- Sectional roll-up raised panel garage doors
- Electric garage door opener with two remotes
- Energy efficient dual pane Low E Vinyl windows
- Rear and side yard fencing

Dream Kitchens

- State-of-the-art, black Whirlpool Gold® appliances including-
 - Slide-in 30" self cleaning gas range with power burners and time saving convection cooking system
 - Built-in ENERGY STAR qualified dishwasher with Quiet Partner sound system and hidden controls
 - Built-in vented microwave/hood combo
- Granite slab countertops with 6" backspalsh
- Beautiful maple cabinetry including-
 - Designer features including concealed hinges, melamine interiors, adjustable upper shelves and roll out shelf in lower maple cabinets
- Stainless steel, under-mount double bowl sink with waste disposal
- Moen® faucet with pullout spray
- Overhead recessed can lighting

Enhanced Living Spaces

- Impressive 12" tile in entry, kitchen, baths, laundry, and nook (per plan)
- Central heat and 13-seer air conditioning system
- Raised panel doors throughout the entire home
- Impressive 3 1/4" baseboards
- Rounded bullnose drywall corners
- Rocker switches
- Pre-wired television in great room and master bedroom
- Pre-wired telephone in kitchen and master bedroom
- Ceiling fan pre-wire in great room and master bedroom

Elegant Baths

- Master bath includes beautiful solid surface surrounds and countertops
- Guest baths include integrated tub surround and solid surface countertops
- Clear glass shower enclosure with chrome frame at master bath
- Beautiful recessed panel maple cabinetry including-
 - Designer features including concealed hinges and melamine interiors
- Designer faucet fixtures by Moen®
- Full width vanity mirror in master bath
- Frameless medicine cabinet in master bath

HOMESITE # _____

BUYER: _____

CO-BUYER: _____

Del Webb®



Prices, financing, plans, specifications, features, square footage, product availability and other terms are effective date of publication and subject to change without notice. The square footage calculation for this house was made based on plan dimensions or digital drawing files only and may vary from finished square footage of the house as built. Floorplan and elevations are an artist's renderings. Front exterior or designs including, but not limited to, placement, size and number of windows, porches and entries may vary per elevation. This plan has a copyright by Del Webb and may not be reproduced without written consent. 11/19/2013