

SHERWOOD

2,071 Square Feet
 2 Bed / 2 Bath
 2 Car Garage
 1 Story
 Private Den
 Bright Dining Nook



Elevation A



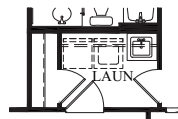
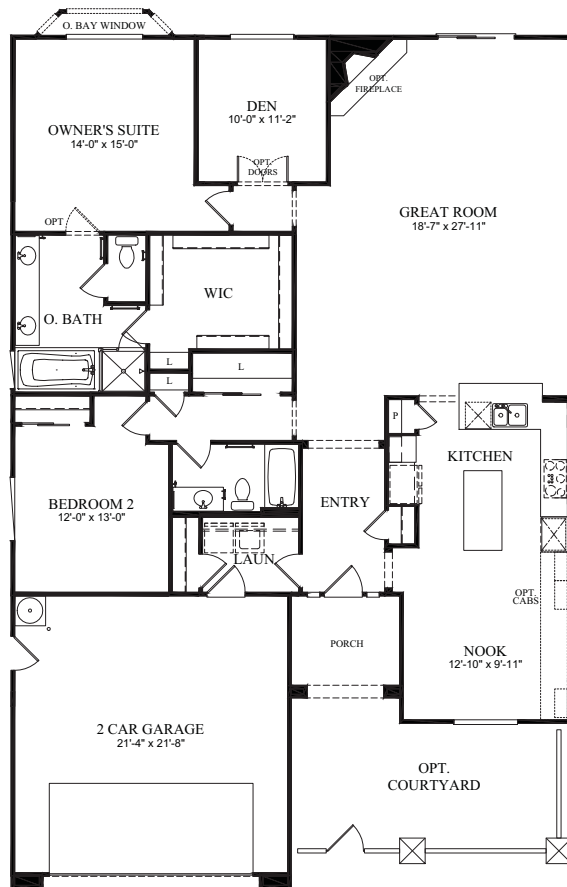
Elevation B



Elevation C



Elevation D



Opt. Cabinet & Sink at Laundry

CLASSICS FEATURES

First Impressions

- Timeless architectural designs
- Custom designed exterior paint schemes
- Decorative stone accents (per elevation)
- Front yard landscaping with automatic sprinklers
- Concrete siding with a 50-year warranty (per elevation)
- Concrete roof tiles with a limited lifetime warranty
- Dramatic 8' Thermo-Tru Fiber Classic entry door
- Broom finished concrete driveway and walkway
- Sectional roll-up raised panel garage doors
- Electric garage door opener with two remotes
- Energy efficient dual pane Low E Vinyl windows
- Rear and side yard fencing

Dream Kitchens

- State-of-the-art, black Whirlpool Gold® appliances including-
 - Built-in 36" gas cook top with five power burners and precise heat controls
 - Built-in 30" double oven with one touch bake feature and convection cooking system on upper
 - Built-in ENERGY STAR qualified dishwasher with Quiet Partner sound system and hidden controls
 - Built-in vented microwave/hood combo
- Granite slab countertops with 6" backspalsh
- Beautiful maple cabinetry including-
 - Designer features including concealed hinges, melamine interiors, adjustable upper shelves and roll out shelf in lower maple cabinets
- Stainless steel, under-mount double bowl sink with waste disposal
- Moen® faucet with pullout spray
- Overhead recessed can lighting

Enhanced Living Spaces

- Impressive 12" tile in entry, kitchen, baths, laundry, and nook (per plan)
- Central heat and 13-seer air conditioning system
- Raised panel doors throughout the entire home
- Impressive 3 1/4" baseboards
- Rounded bullnose drywall corners
- Rocker switches
- Pre-wired television in great room and master bedroom
- Pre-wired telephone in kitchen and master bedroom
- Ceiling fan pre-wire in great room and master bedroom
- Direct vent gas fireplace included in Estate Series
- Covered rear patio with lighting (per plan)

Elegant Baths

- Master bath includes beautiful solid surface surrounds and countertops
- Guest baths include integrated tub surround and solid surface countertops
- Beautiful recessed panel maple cabinetry including-
 - Designer features including concealed hinges and melamine interiors
- Designer faucet fixtures by Moen®
- Full width vanity mirror in master bath
- Frameless medicine cabinet (per plan) in master bath
- Clear glass shower enclosure with chrome frame at master bath

HOMESITE # _____

BUYER: _____

CO-BUYER: _____

Del Webb®

